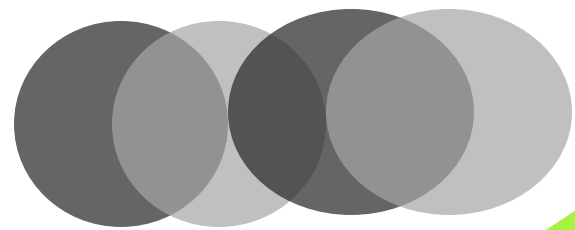


# COMPANY PROFILE





# TABLE OF CONTENTS

Description	Page Number
Introduction	3
Vision	4
Mission Statement	4
Values	4
Services	5
Ownership & Management	6
Approach	6
Experience	7
Resources	8
Company Details	15

# INTRODUCTION

Maeba A Mabedi Enterprise (Pty) Ltd is based in Pretoria, established in 2012 and started to operate from home. A private company that is 100% black owned.

Our business is focus in services such as the investment in properties and franchise. The goal hereby is the development and management of a globally diversified and centrally managed properties.

The company also render services in different franchise businesses. We have the necessary skills and experience to provide professional services for residential and commercial sectors for number of separate sub-corporations, with related but distinct products, services, markets and opportunities.



## VISION:

**Our vision is to build a committed multi faced enterprise that will:**

- Become most valued, trusted resource for the products and services through excellence and efficiency in all aspects to its customers, with high level of professionalism and with leading practice that will exceed expectations and set new standards!

## MISSION:

Our mission is to be a committed company in providing the most unique and comprehensive cost-effective solutions at high quality professional service. Through a network of highly qualified professionals, we offer and maintain an ethos of high quality, uncompromised, unequalled customer support and business integrity supported by a system that practises excellent record professional disciplines services keeping and traceability (e.g. renting of properties, franchise business etc.).

## VALUES:

Maeba Enterprise care to conduct its work with high level of professionalism and ethical values deeply rooted in its name of “Working together to create/build sustainable wealth” Of paramount importance is the employee’s belief that their role is essential in maximizing stakeholder benefits.

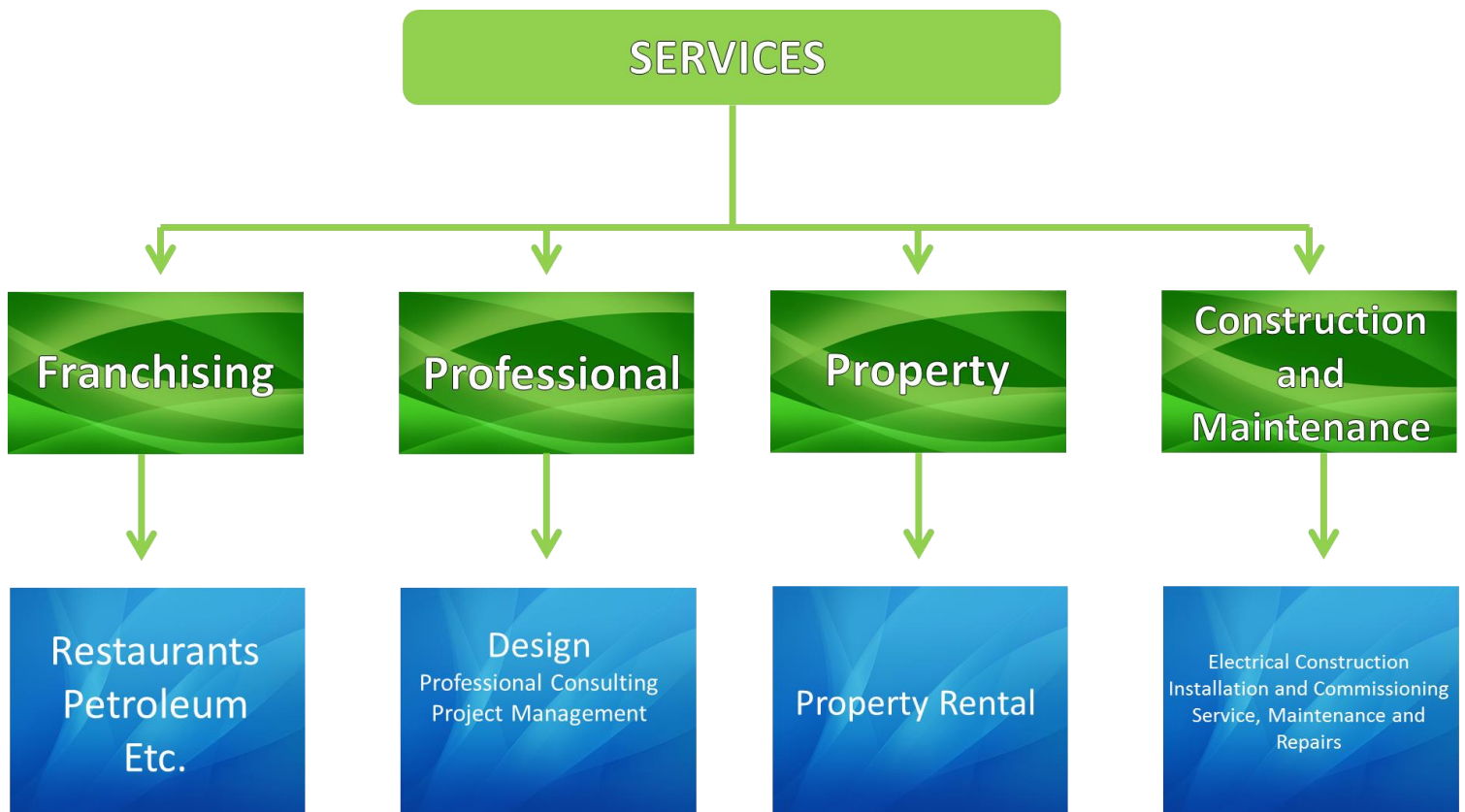
Maeba Enterprise’s values include:

- Respect
- Trust and Honesty
- Leadership and Team spirit
- Continuous pursuit of professionalism for success and excellence

# SERVICES



We provide the following professional services in the real estate, franchising, electrical, electronic and computer engineering industries:





## OWNERSHIP AND MANAGEMENT

Maeba A Mabedi Enterprise is fully owned by a team of seven (07) indigenous South African citizens. These are all Engineers by Profession in different disciplines. They recognised the social and financial imbalances of our society and seek to apply capacity building and training initiatives to address these areas. They are eager to plough back through cooperation from business side to address the financial wellness of their direct communities.

The company is a level 3 B-BBEE contributor with 110% procurement recognition level and is headed by a dynamic, motivated and matured Directors. Maeba Enterprise is committed to transformation and also believe in empowerment of its people.

## APPROACH

Maeba Enterprise sees teamwork on every project as the key success ingredient and is responsible for creating this environment. We further believe in a hands-on approach on all our projects.

Maeba Enterprise plans to be equipped with the latest technology and have the necessary staff and resources to ensure the best professional service is provided at all times. Our teams will be built by combining the strengths of the individual members and refining skills to meet and exceed the Client's expectations.



## EXPERIENCE

Maeba Enterprise has a combined professional experience of 45 years among its Principals and Members. All the Directors are Engineers in vast fields (Electrical, Electronic, Consulting and Construction, and Computer Engineering).

Maeba Enterprise has 4 years' project experience but relies on that acquired by its members only.





## RESOURCES

**Director:** AM Choma

## QUALIFICATIONS

- B. Eng. Electrical (2007) University of Pretoria
- B. Eng. (Hons) Management of Technology (2012) University of Pretoria
- Installation Electrician (2013)-PTA West College/Labour

## EXPERIENCE

- Netgroup consulting – Engineer-In-Training-Power System Protection (April 2008 – April 2010)
- City Of Tshwane– Engineering Consultant-Power System Protection (June 2010 – to date)
- Proswande Consulting & Projects – Consulting; Tendering and Project Management – (April 2013 to date)

## PROFESSIONAL AFFILIATIONS

- ECSA - Candidate Engineer – 20095354
- ESETA - Member - 31583





## RESOURCES

**Director:** MH Komane

## QUALIFICATIONS

- B.Sc Ed (1998) Univ. of North West
- Postgraduate Diploma in Engineering ( Satellite Telecommunications) (1999) Univ. of Stellenbosch
- B.Eng. Electronics (2007) Univ. of Pretoria
- MEng (2013) Univ. of Pretoria

## EXPERIENCE

- CSIR (DPSS) Pre-Graduate Engineer (November 2005 –May 2006)
- MTN NWG (Operation Engineer) (March 2007-May 2009)
- MTN NWG- Senior Engineer: Planning and Optimization (June 2009 - September 2011)
- MTN NWG Switch Coordination Manager (September 2011 – Current)



## RESOURCES

**Director:** JT Mahlangu

### QUALIFICATIONS

- B. Eng. (Hons) Technology Management (2010) University of Pretoria
- B. Eng. Electrical (2006) University of Pretoria
- Installation Rules N2 (2010) Tshwane South College
- MBA (Current) University of Witwatersrand

### EXPERIENCE

- Exxaro Grooteegeluk Coal Mine – Engineer-In-Training – Jan 2007 to August 2008
- Consolidated Power Projects – Tendering & Project Management – August 2008 to current

### PROFESSIONAL AFFILIATIONS

- ECSA – Professional Engineer – 20130093
- SACPCMP – Professional Construction Manager – C/1023/2014
- SAIEE – Member – 12253
- PMSA – Member – 8966
- Department of Labour – Installation Electrician - 31288



## RESOURCES

**Director:** MR Malepe

## QUALIFICATIONS

- B. Eng. Electronic (2007) University of Pretoria
- M.Eng. Engineering Management (Current) University of Johannesburg

## EXPERIENCE

- Flextronics SA – Software Tester (Nov 2006 to Nov 2007)
- Eskom Distribution: Engineer-In-Training – Jan 2008 to Dec 2008
- Eskom Distribution – Design Engineer – Jan 2009 to Jun 2012
- Eskom Distribution – Senior Design Engineer – Jan 2009 to Jun 2012

## PROFESSIONAL AFFILIATIONS

- ECSA – Candidate Engineer – 20085412



## RESOURCES

**Director:** ML Masethe

### QUALIFICATIONS

- Certificate of Pharm (1996) – Seshego training centre
- N. Diploma Electrical (1999) Witwatersrand Technikon
- B. Eng. Electronics (2007) University of Pretoria
- Project Management (current) UNISA

### EXPERIENCE

- Pharmacist assistant (Jane Furse Hospital)- June 1992 to 1995
- Auxiliary Nursing in training (Jane Furse Hospital)- Jan 1996 to 1997
- Telkom Ltd - Technician in training (Jun 1998 –Dec 1998)
- Flextronics SA – Software Tester (Jan 2007 to Nov 2007)
- Sasol Ltd Engineer in training – Jan 2008 to Jun 2010.
- Sasol Ltd Control & Instrumentation Engineer – Jun 2011 to current
- Project Leader in numerous projects implementation.

### PROFESSIONAL AFFILIATIONS

- ECSA – Candidate Engineer – 20085551
- Member SAIMC



## RESOURCES

**Director:** MP Ngwenyama

### QUALIFICATIONS

- Post Graduate Diploma – Railways Signalling & Telecommunications (2010) Central Queensland University of Australia
- B. Eng. Electronic (2006) University of Pretoria
- National Diploma - N6 Electrical Heavy Current (1999) Tshwane North College

### EXPERIENCE

- Telkom SA SOC (Pty) Ltd – Engineer in Training (2007)
- Ansaldo STS South Africa (Pty ) Ltd – Signalling & Telecoms Engineer (2008 – 2010)
- Eskom SOC (Pty) Ltd – Planning & Design Engineer for Eskom Telecoms Network

### PROFESSIONAL AFFILIATIONS

- ECSA – Professional Engineer – 20140123

## ANNEXURE A - SHAREHOLDING

Name	Competence	% Shares	% Voting	PDI ?	Woman ?
AM Choma	Electrical Engineer	17	17	Yes	No
MH Komane	Electronic Engineer	17	17	Yes	No
JT Mahlangu	Electrical Engineer	17	17	Yes	No
MR Malepe	Electronic Engineer	17	17	Yes	No
ML Masethe	Electronic Engineer	16	16	Yes	No
MP Ngwenyama	Electronic Engineer	16	16	Yes	No
Totals		100	100		

### Summary of BEE credentials

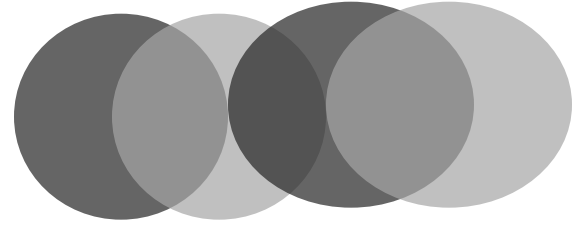
SMME Classification : Small ()

B-BBEE ScoreCard : Level 3 Contributor

**Maeba A Mabedi Enterprise (Pty) LTD**

## ANNEXURE B - BANKING DETAILS

Bank : FNB Bank  
Branch : Menlyn  
Branch Code : 252645  
Account Number : **62447232711**  
Account Name : Maeba A Mabedi Enterprise (Pty) Ltd  
Account Type : Cheque/Current Account  
Branch Contact No. : +27 (0) 12 470 9100



## COMPANY DETAILS

Company Name:	Maeba A Mabedi Enterprise (Pty) Ltd
Registration No.:	2012/108388/07
VAT No. :	Not Applicable

### Maeba Enterprise can be contacted as follows:

#### Postal Address

PO BOX 12560

**HATFIELD**

0045

#### Physical Address

35 PROVINCE, ARUNDO ESTATE

66 RIETSPRUIT AVENUE

THE REEDS

#### Centurion

0157

#### Contact Numbers

Telephone	:	+27 (0)
Fax	:	+27 (0) 86 764 7548
Email	:	info@maebaenterprise.co.za
Web	:	<a href="http://www.maebaenterprise.co.za">http://www.maebaenterprise.co.za</a>